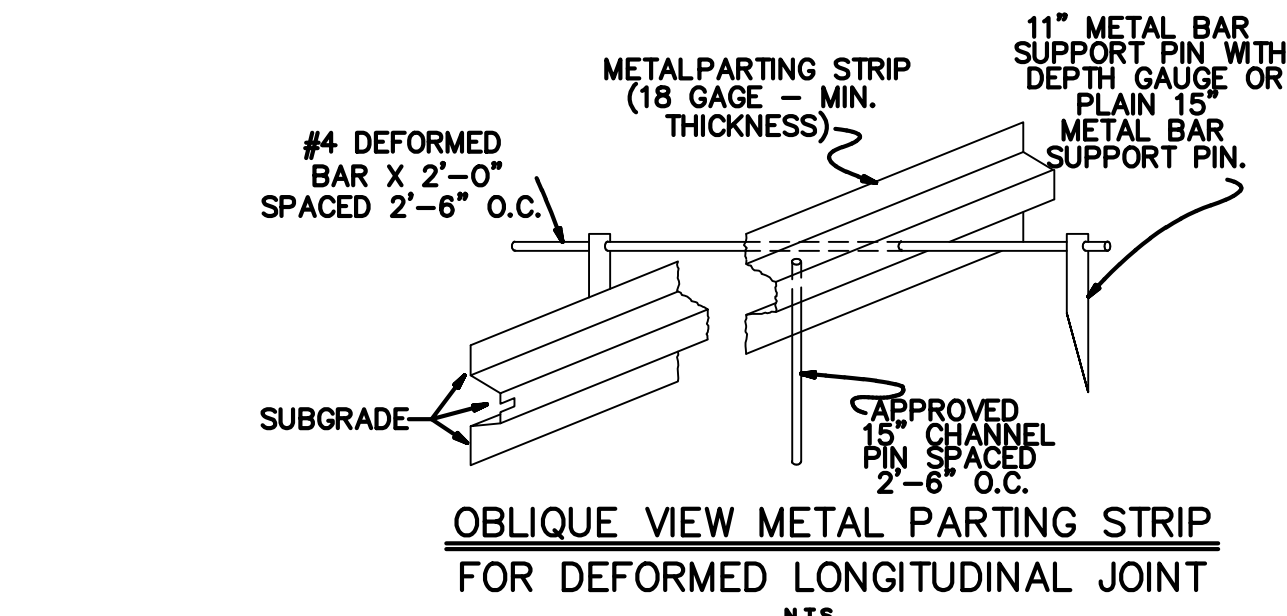
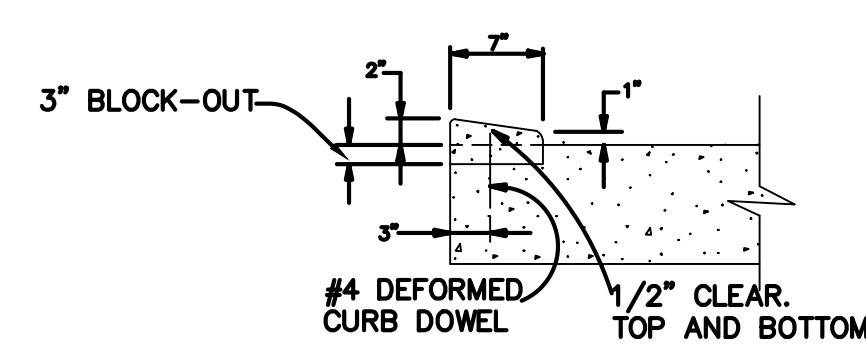


DEFORMED LONGITUDINAL JOINT
(ALSO CALLED METAL KEYED JOINT)
N.T.S.

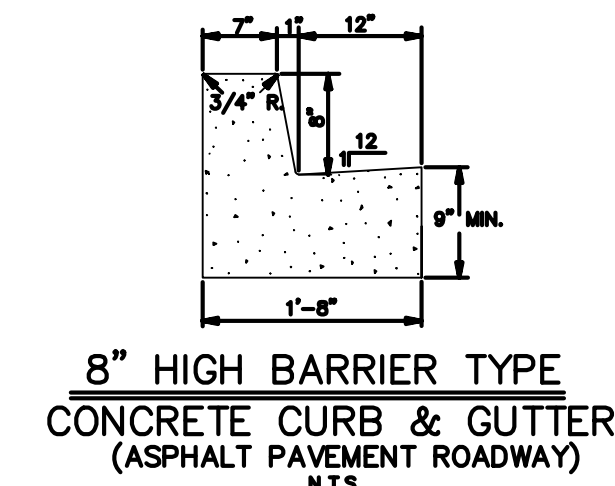


OBLIQUE VIEW METAL PARTING STRIP
FOR DEFORMED LONGITUDINAL JOINT
N.T.S.

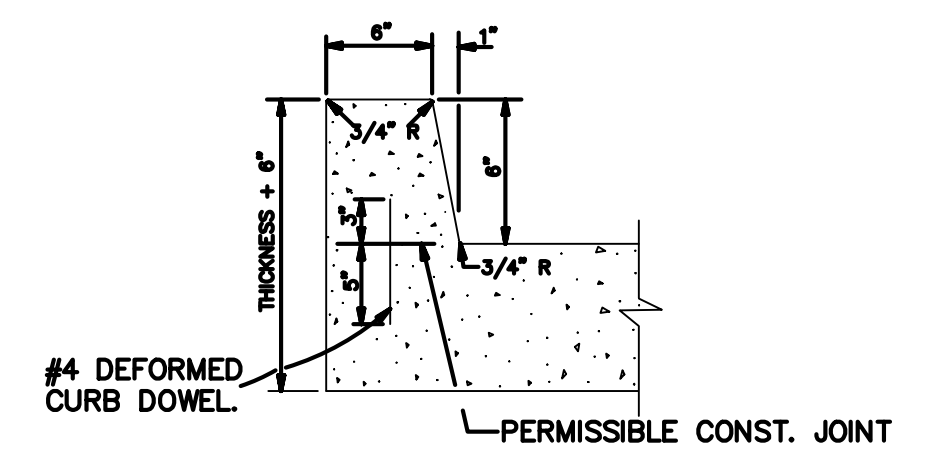
NOTE: ALL JOINTS FOR CONCRETE PAVEMENT SHOWN IN LA. D.O.T.D. STANDARD PLANS CP-01 CAN BE USED AT THE REQUEST OF THE ENGINEER WHO SHALL PROVIDE CONSTRUCTION DETAILS TO CONTRACTOR.



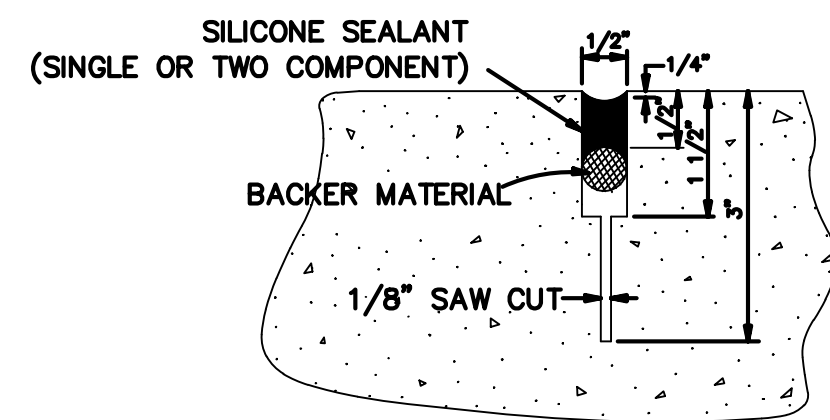
MODIFIED BARRIER CURB
N.T.S.



8" HIGH BARRIER TYPE
CONCRETE CURB & GUTTER
(ASPHALT PAVEMENT ROADWAY)
N.T.S.

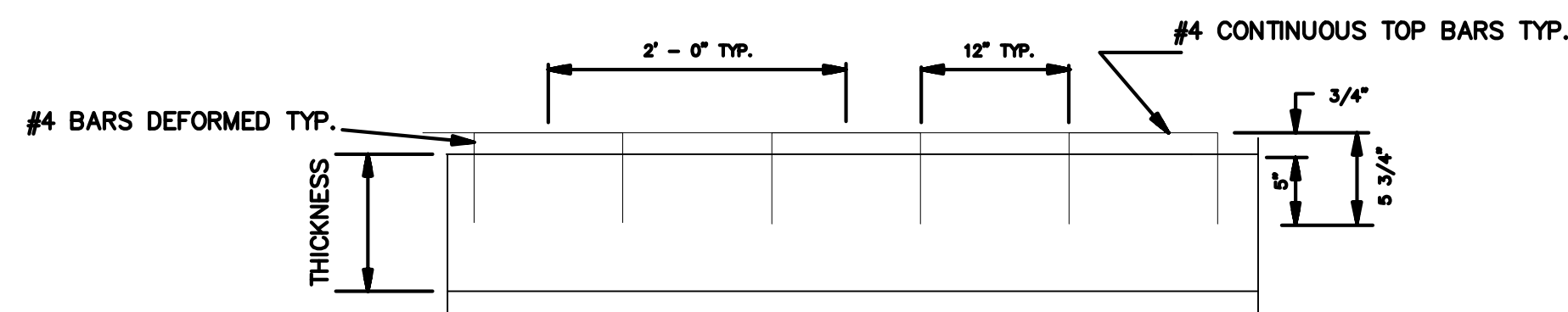


6" HIGH BARRIER
TYPE CONCRETE CURB.
(CONCRETE PAVEMENT ROADWAY)
PERMISSIBLE CONST. JOINT

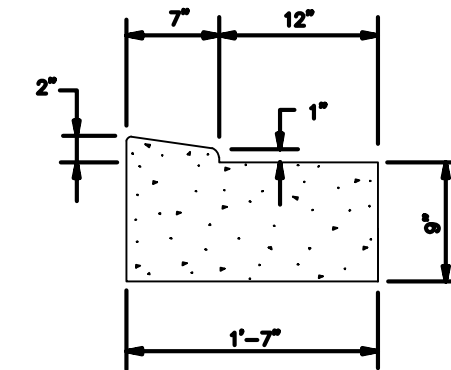


DETAIL "A"
N.T.S.

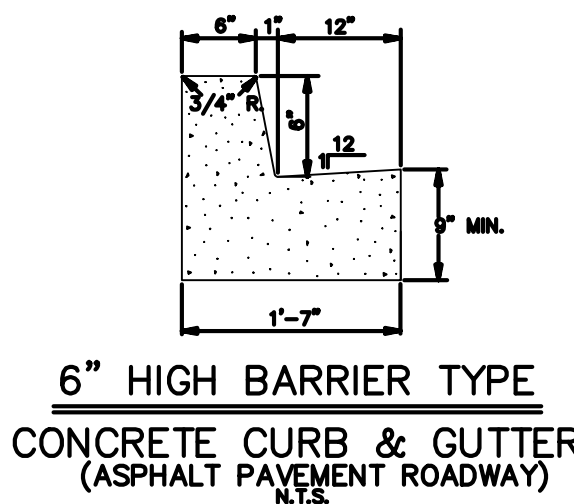
DETAILS "A" AND "B" ARE USED IN CONJUNCTION WITH TRANSVERSE DUMMY JOINT OR CONST. JOINT.



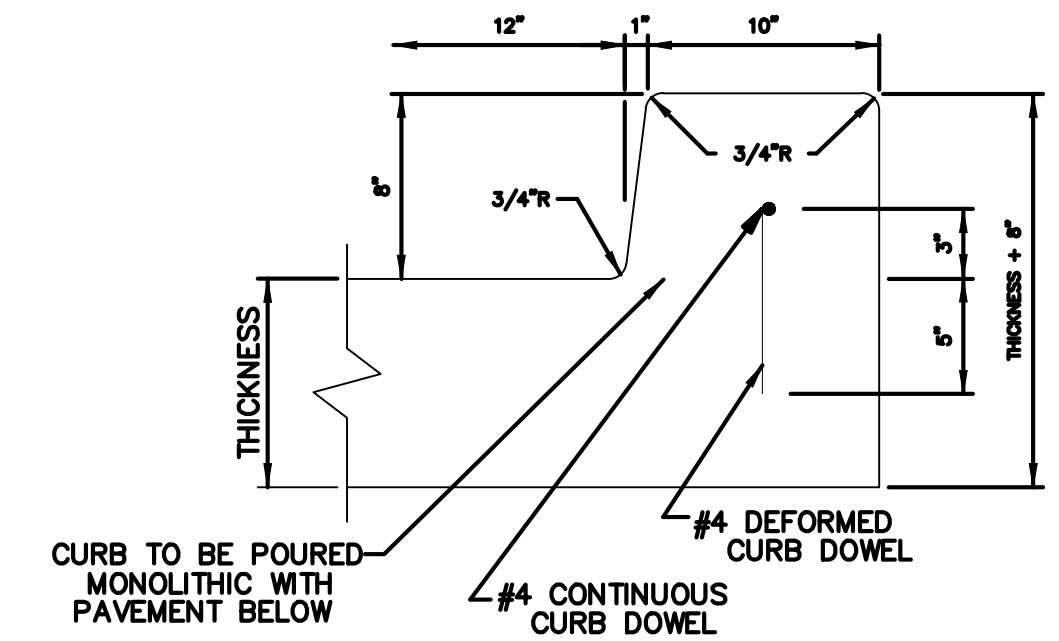
MODIFIED CURB DOWELS
(USED ON MODIFIED BARRIER CURB)
N.T.S.



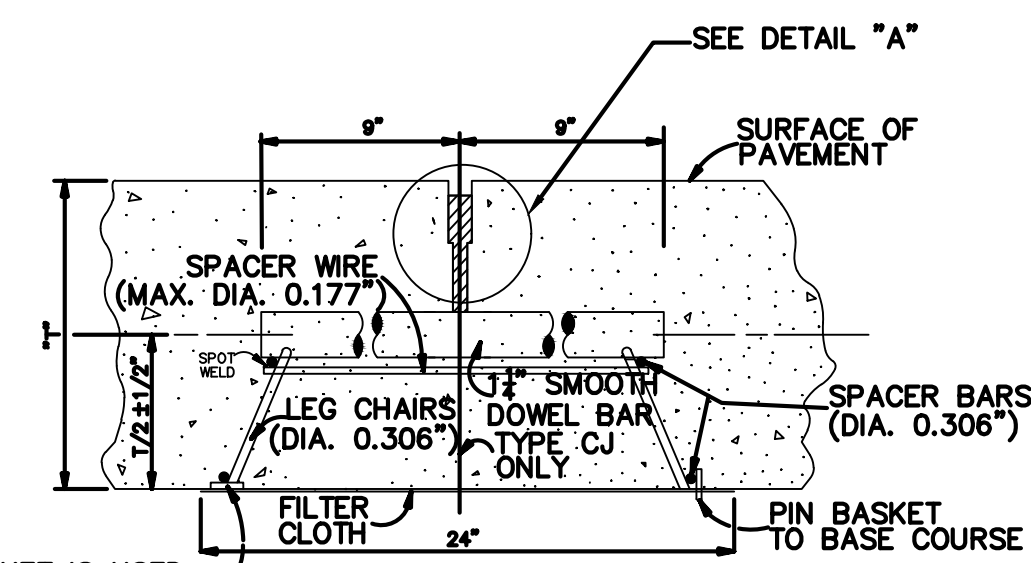
MODIFIED BARRIER CURB AND GUTTER
N.T.S.



6" HIGH BARRIER TYPE
CONCRETE CURB & GUTTER
(ASPHALT PAVEMENT ROADWAY)
N.T.S.

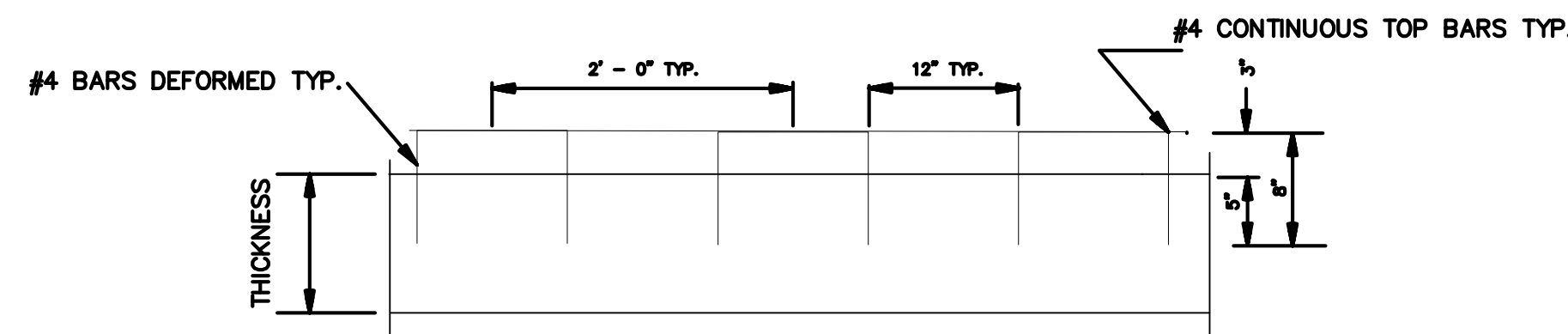


HEAVY DUTY BARRIER TYPE
CONCRETE CURB
N.T.S.

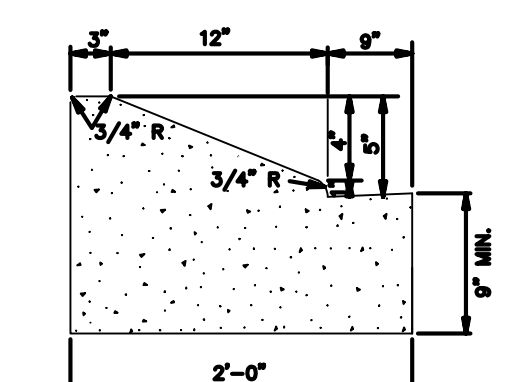


TYPE DJ OR CJ
(TRANSVERSE DUMMY JOINT OR CONSTRUCTION JOINT)
(SECTION "B-B")
N.T.S.

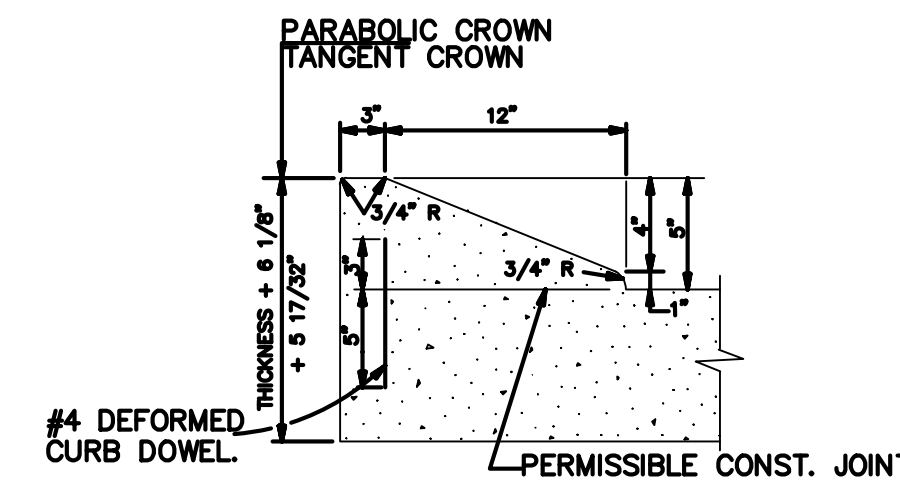
WHEN DOWEL BASKET IS USED ON SAND BASE SUPPORT WITH 9 SQ. IN. (MIN.) SAND PLATE.



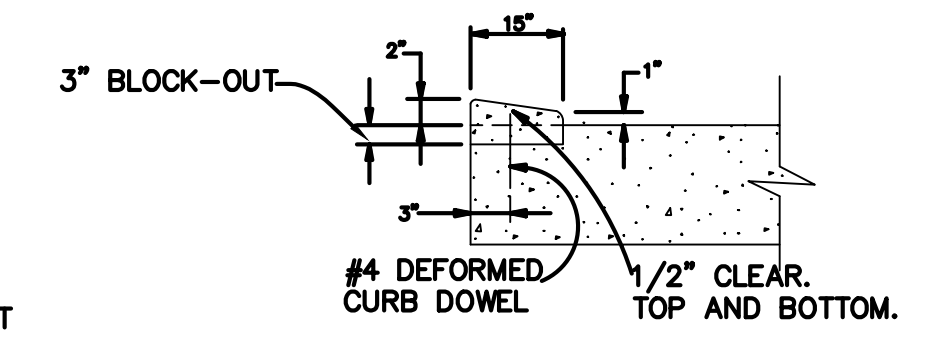
CURB DOWELS
N.T.S.



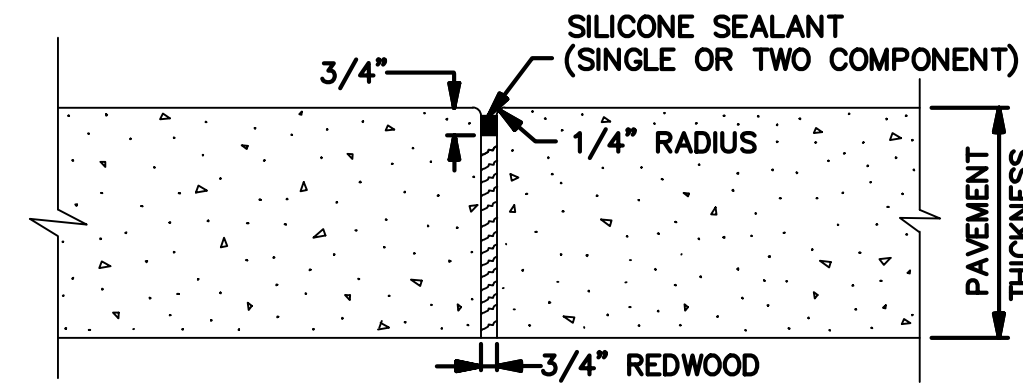
5" HIGH ROLLOVER TYPE
CONCRETE CURB & GUTTER
(ASPHALT PAVEMENT ROADWAY)
N.T.S.



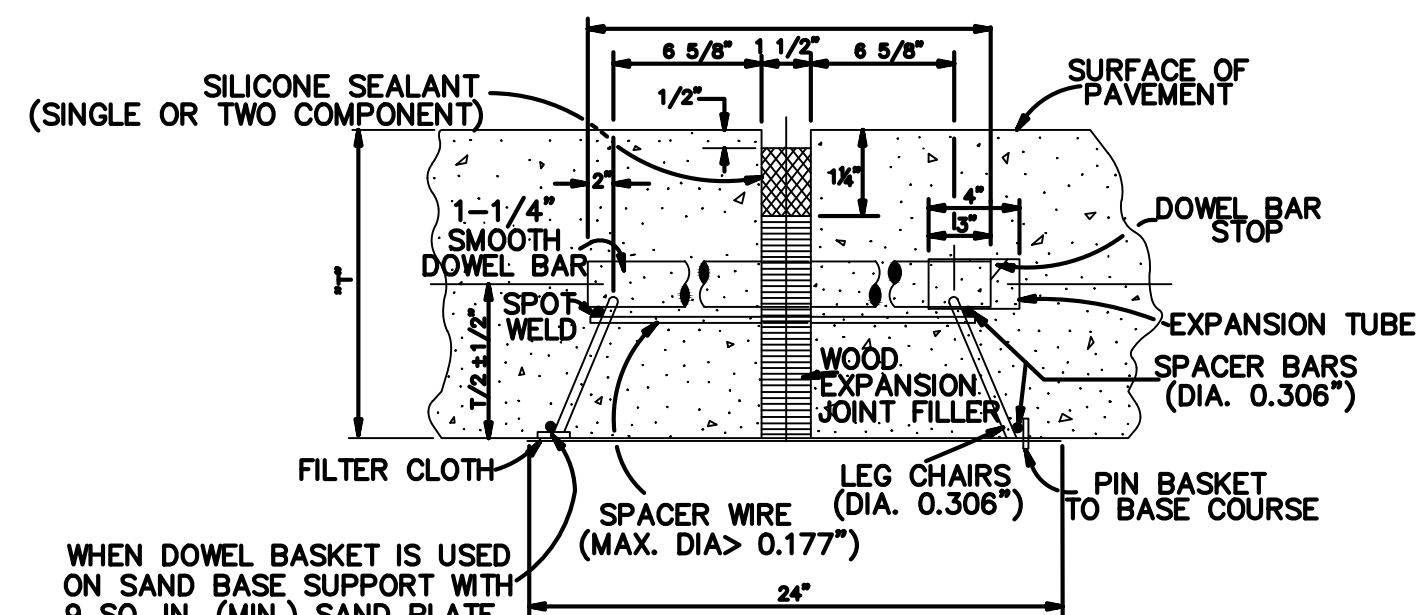
5" HIGH ROLLOVER
TYPE CONCRETE CURB
(CONCRETE PAVEMENT ROADWAY)
N.T.S.



MODIFIED ROLLOVER CURB
N.T.S.

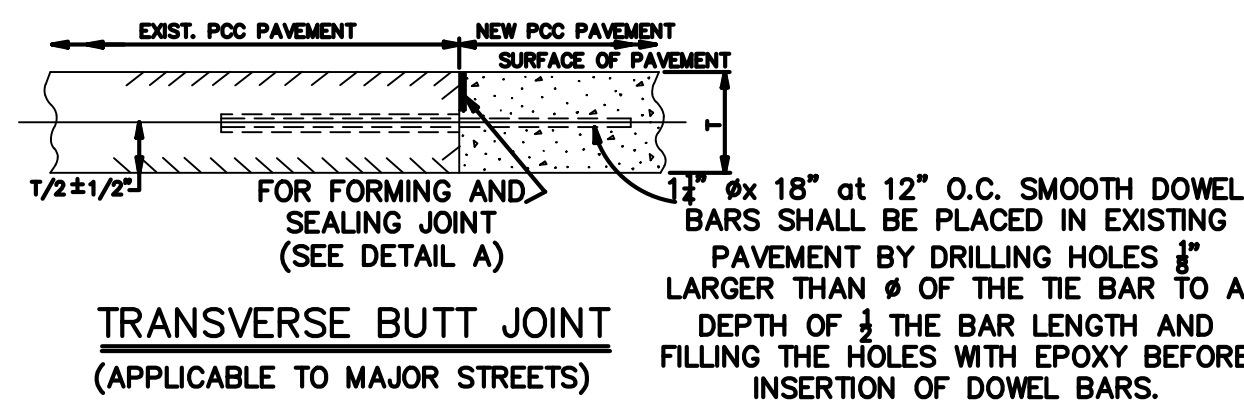


EXPANSION JOINT
(FOR CONCRETE SIDEWALK & RAMP FOR HANDICAPPED)
N.T.S.



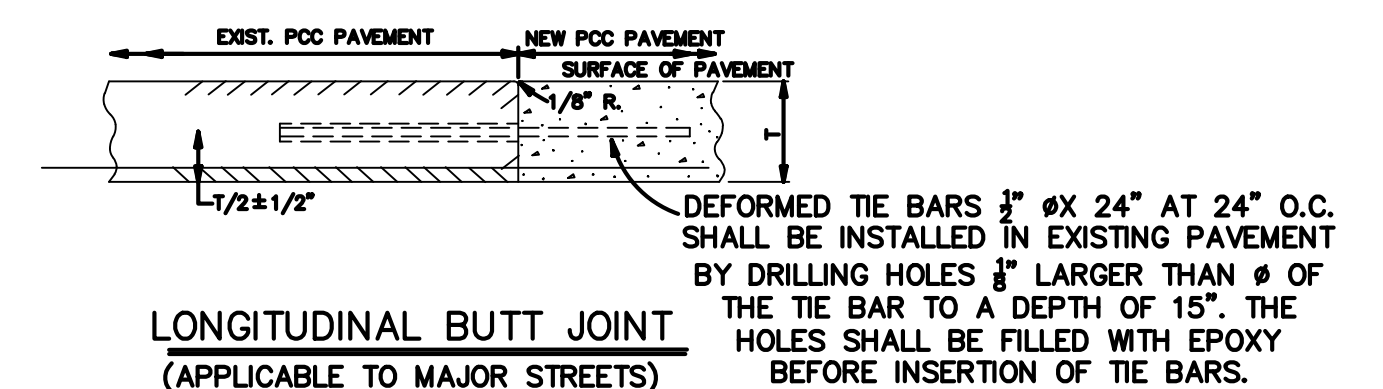
TYPE EJ
(TRANSVERSE EXPANSION JOINT)
(SECTION "A-A")
N.T.S.

WHEN DOWEL BASKET IS USED ON SAND BASE SUPPORT WITH 9 SQ. IN. (MIN.) SAND PLATE.



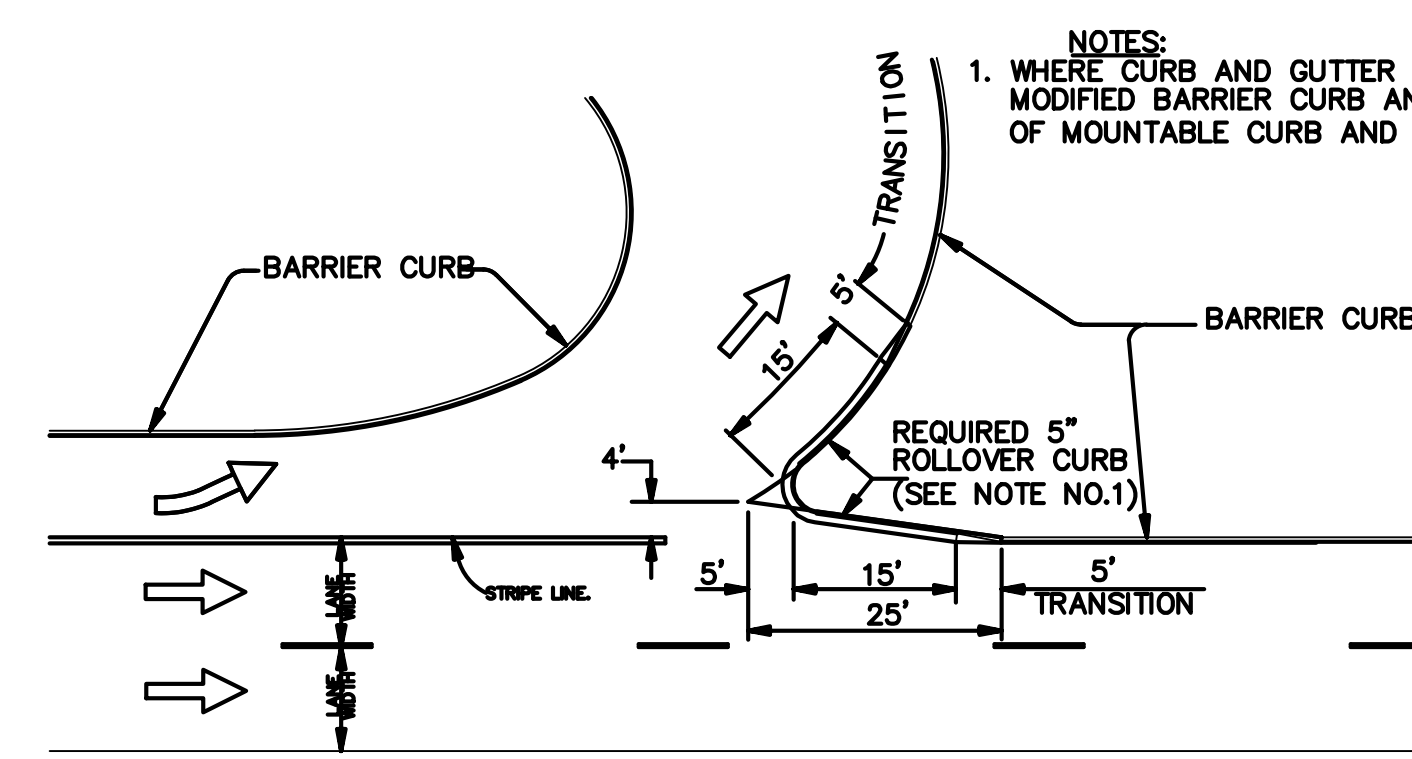
TRANSVERSE BUTT JOINT
(APPLICABLE TO MAJOR STREETS)

1/2" x 1/2" at 12" O.C. SMOOTH DOWEL BARS SHALL BE PLACED IN EXISTING PAVEMENT BY DRILLING HOLES 1/8" LARGER THAN Ø OF THE TIE BAR TO A DEPTH OF 1/2 THE BAR LENGTH AND FILLING THE HOLES WITH EPOXY BEFORE INSERTION OF DOWEL BARS.



LONGITUDINAL BUTT JOINT
(APPLICABLE TO MAJOR STREETS)

DEFORMED TIE BARS 1/2" x 24" AT 24" O.C. SHALL BE INSTALLED IN EXISTING PAVEMENT BY DRILLING HOLES 1/8" LARGER THAN Ø OF THE TIE BAR TO A DEPTH OF 15". THE HOLES SHALL BE FILLED WITH EPOXY BEFORE INSERTION OF THE BARS.



ROLLOVER CURB
IN THE GORE AREA
(U-TURN, LEFT TURN LANE OR ROADWAY SPLIT)
N.T.S.

NOTES:
1. WHERE CURB AND GUTTER IS USED, CONSTRUCT MODIFIED BARRIER CURB AND GUTTER INSTEAD OF MOUNTABLE CURB AND GUTTER.

PROJECT NAME :

PROJECT NUMBER :



DATE	09.05.2019
DRAWN BY	MF/AR
SCALE:	NTS
FILENAME:	S:\Public Works Shared\St. Bernard Standard Details

ST. BERNARD PARISH GOVERNMENT
STANDARD DETAIL PLANS
ROADWAY DETAILS (1 OF 2)

APPROVED BY	DRAWING NUMBER
DATE	SD - 2
THIS DOCUMENT WILL BE CONSIDERED A COPY ONLY, UNLESS EMBOSSED BY A REGISTERED ENGINEER'S SEAL.	
SHEET 2 of 13	