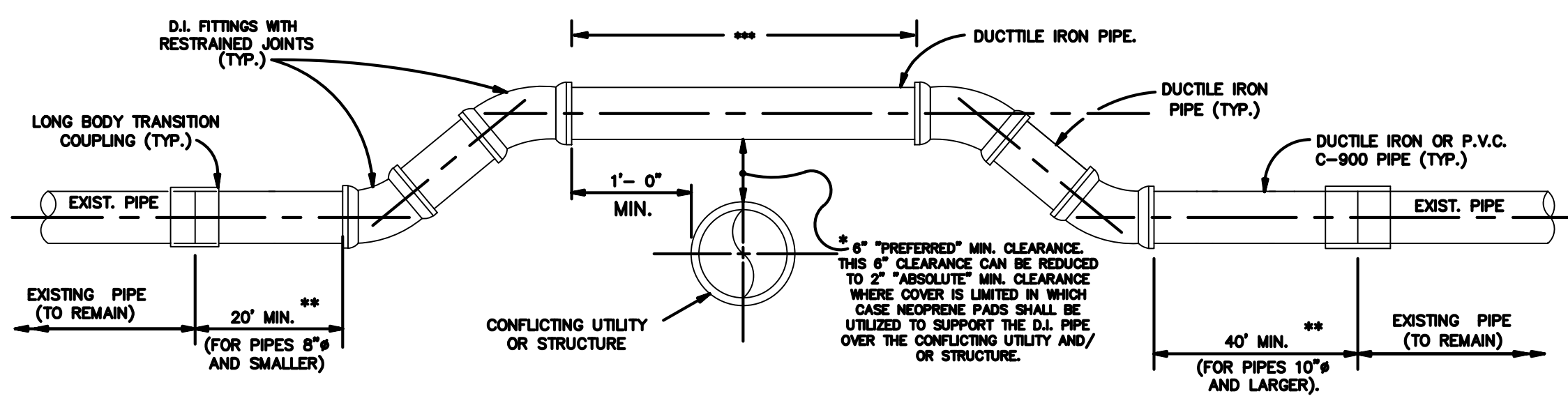
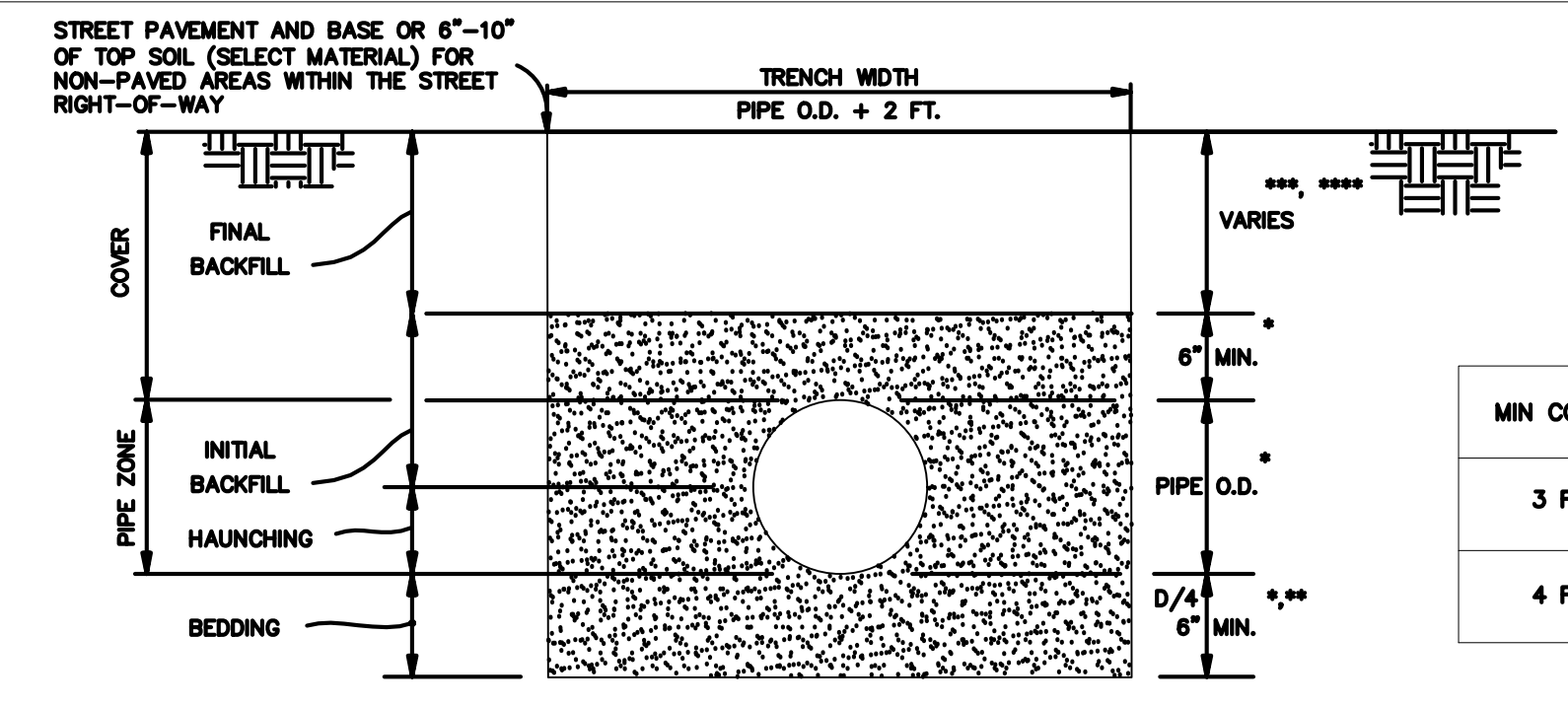


EXCEPTION. MINIMUM CLEARANCE SHALL BE 18" BETWEEN POTABLE WATER AND SANITARY SEWER LINES.  
 \*\*REQUIRED MIN. RESTRAINED LENGTH.  
 \*\*\*ANY LENGTH OF DUCTILE IRON PIPE OR P.V.C. PIPE OVER 20' WILL BE PAID FOR UNDER THE UNIT PRICE FOR DUCTILE IRON PIPE OR P.V.C. PIPE. (20' MAX. INCLUDED IN OFFSET PRICE.)



\* EXCEPTION. MINIMUM CLEARANCE SHALL BE 18" BETWEEN POTABLE WATER AND SANITARY SEWER LINES.  
 \*\* REQUIRED MIN. RESTRAINED LENGTH.  
 \*\*\* ANY LENGTH OF DUCTILE IRON PIPE OVER 20' WILL BE PAID FOR UNDER THE UNIT PRICE FOR DUCTILE IRON PIPE (20' MAX. INCLUDED IN OFFSET PRICE.)



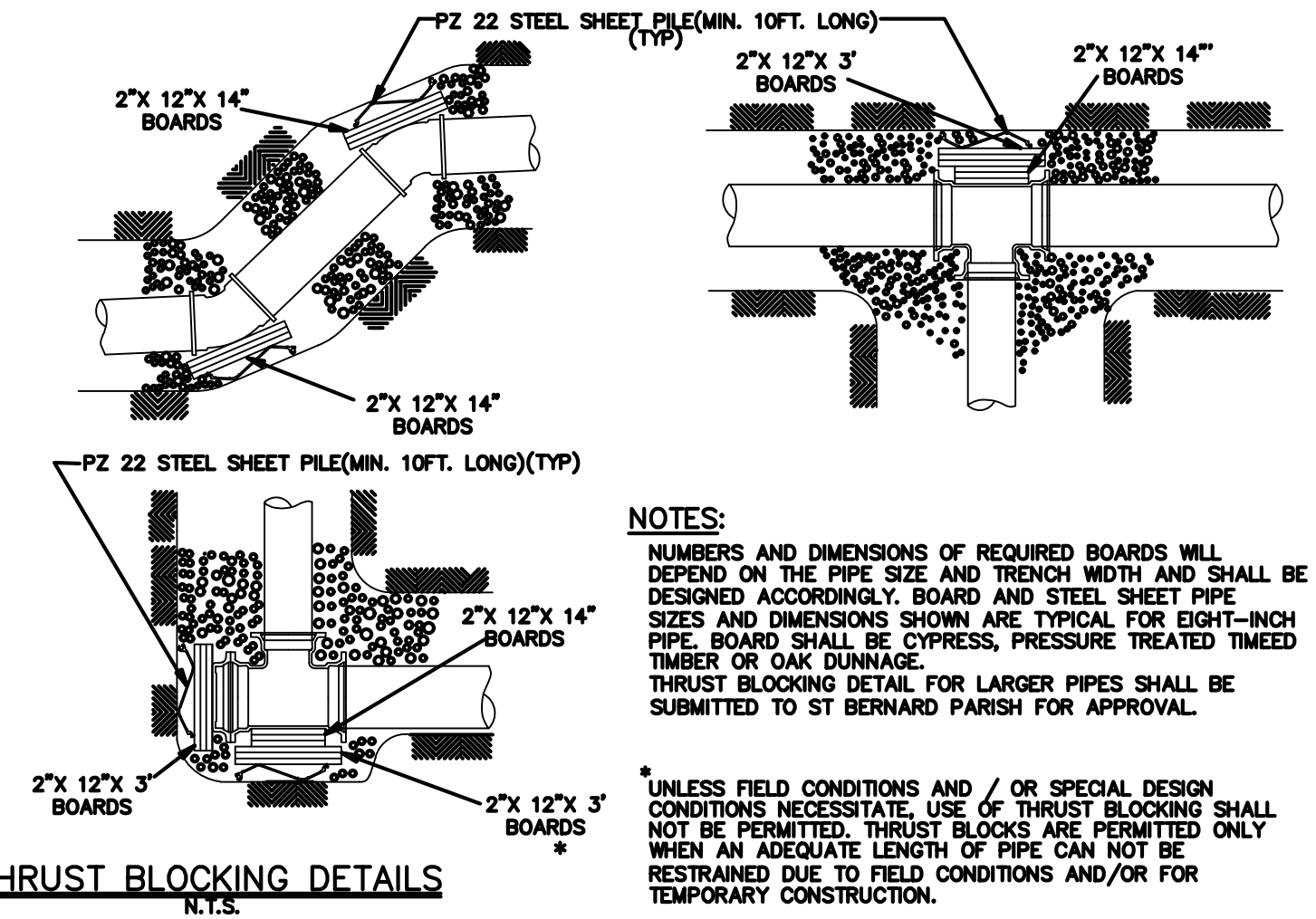
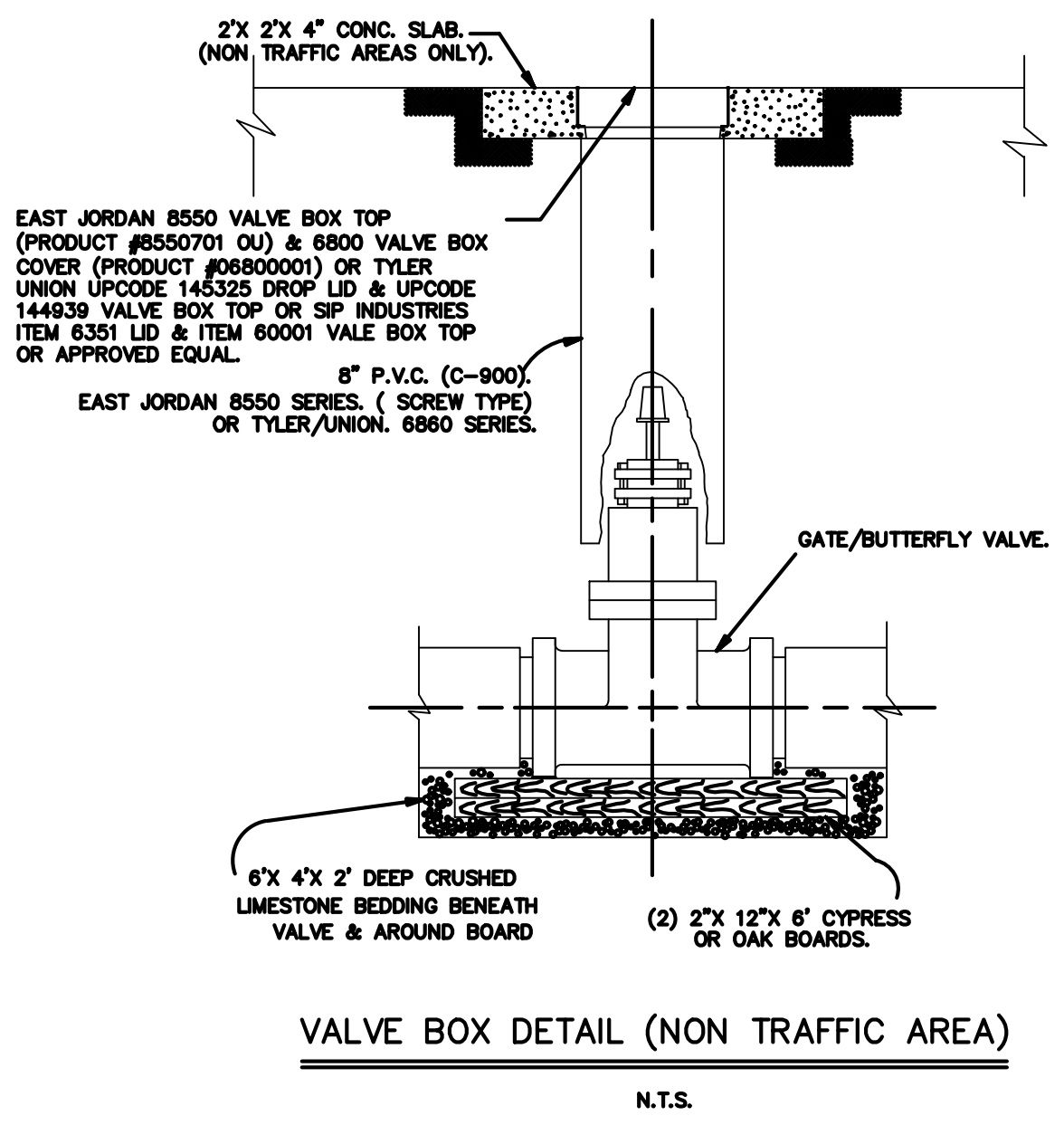
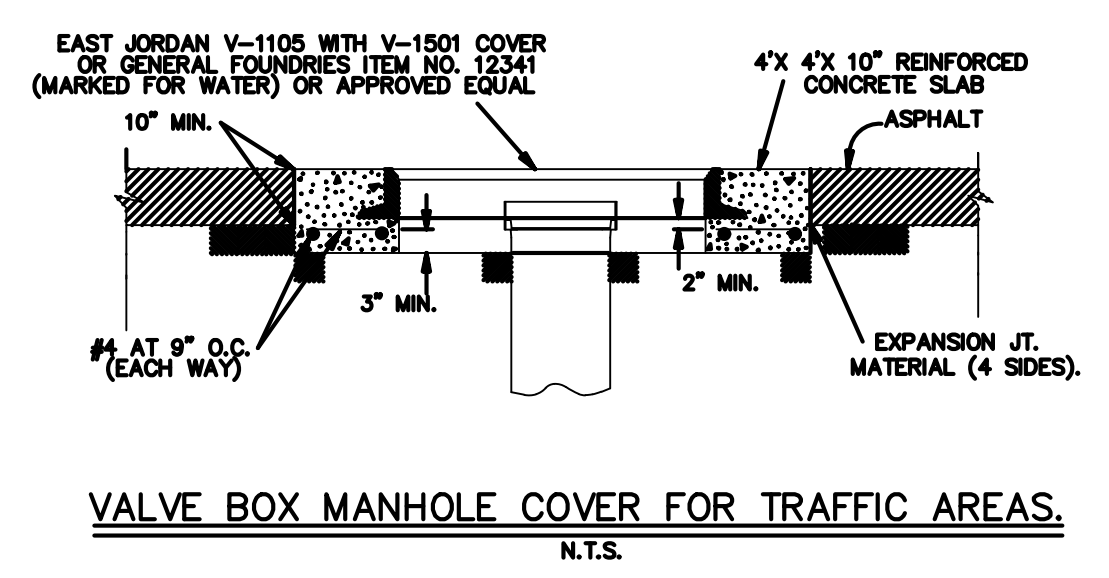
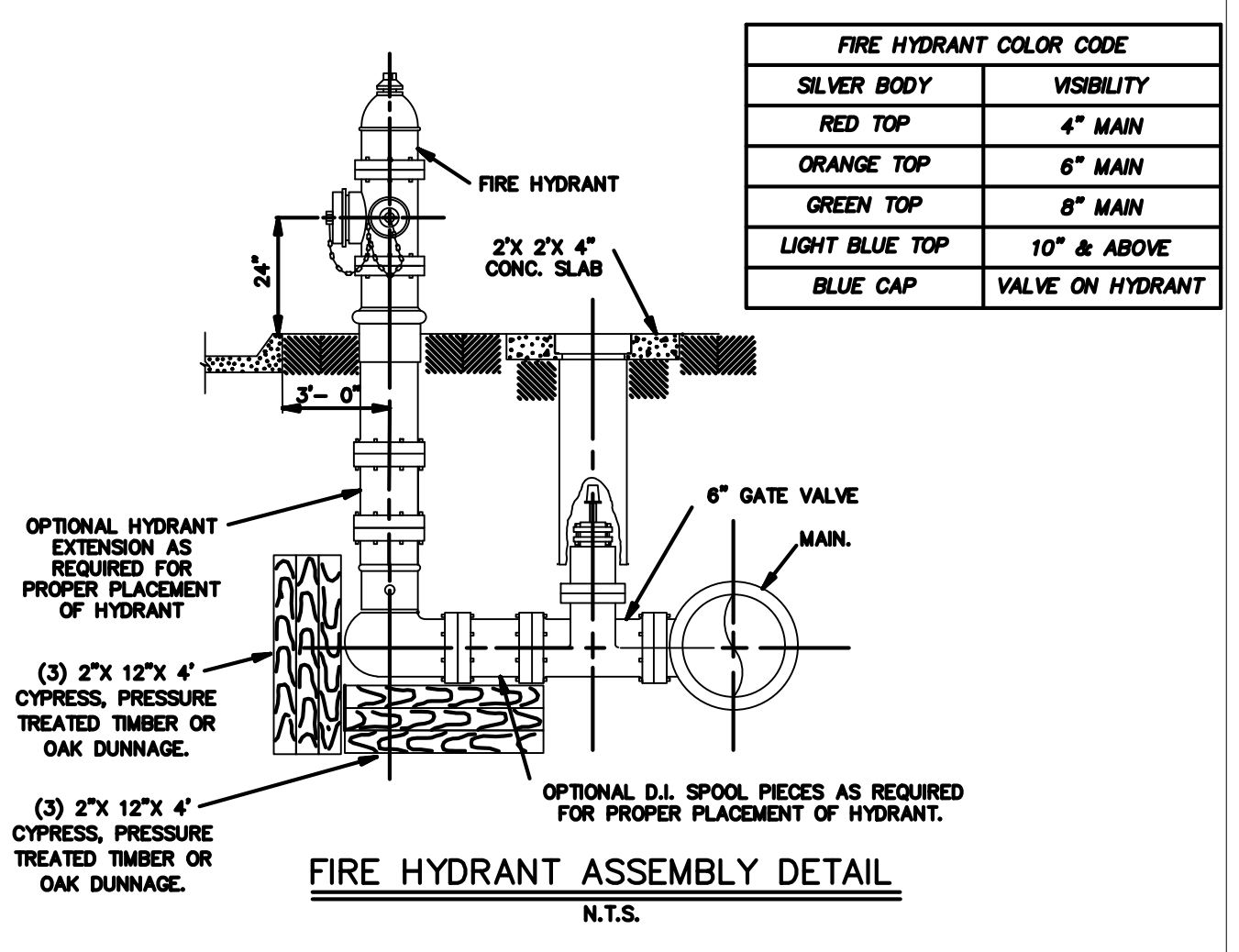
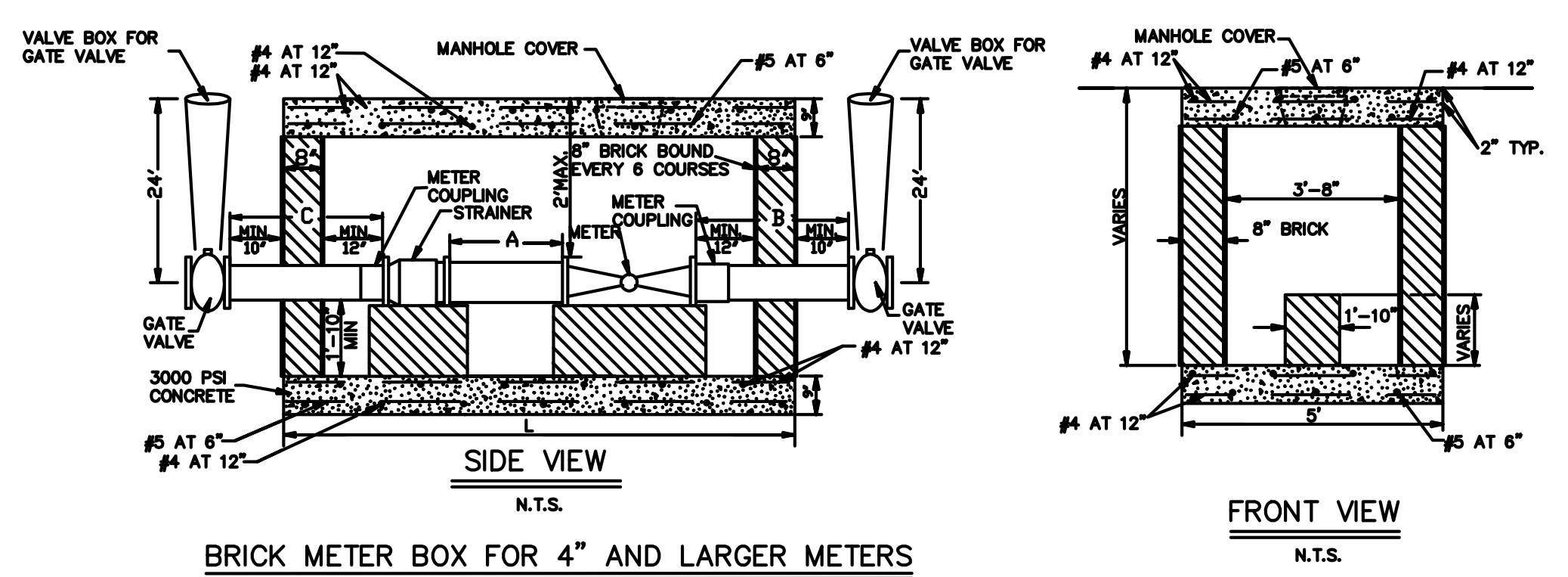
MIN COVER (INCHES)	PIPE SIZE (INCHES)
3 FT.	8-10
4 FT.	>12

**NOTES:**

- COMPACTED SAND, ASTM 2321 CLASS II (SW OR SP) MIN. DENSITY 90% STANDARD PROCTOR (ASTM D698) 6" MAX. LAYERS.
- \*\* PROVIDE BELL HOLES AT EACH JOINT.
- \*\*\* SELECT EXCAVATED MATERIAL FREE OF STUMPS, DEBRIS AND VOIDS (CANAL BANKS AND DITCHES ONLY).
- \*\*\*\* RIVER SAND WITHIN THE STREET RIGHT-OF-WAY MIN. DENSITY 95% STANDARD PROCTOR (ASTM D698)

**NOTES:**

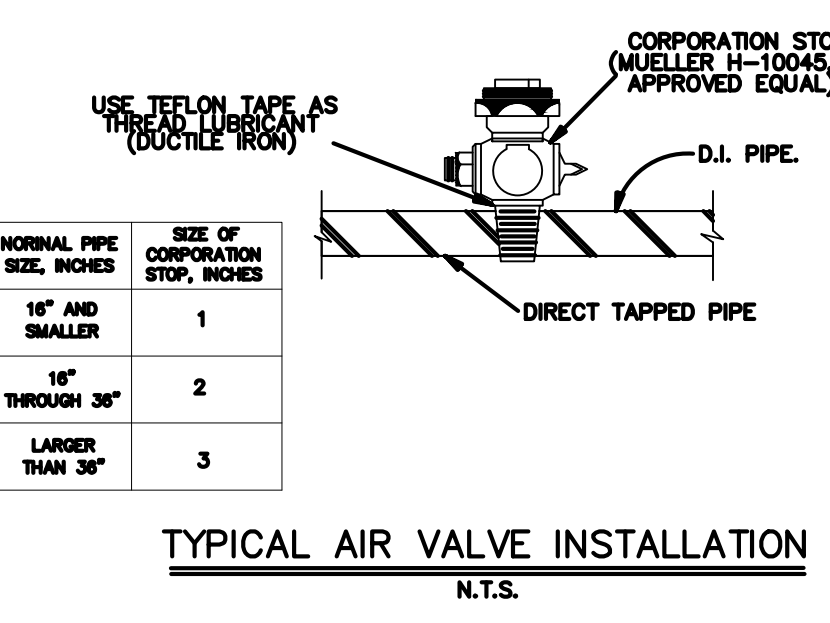
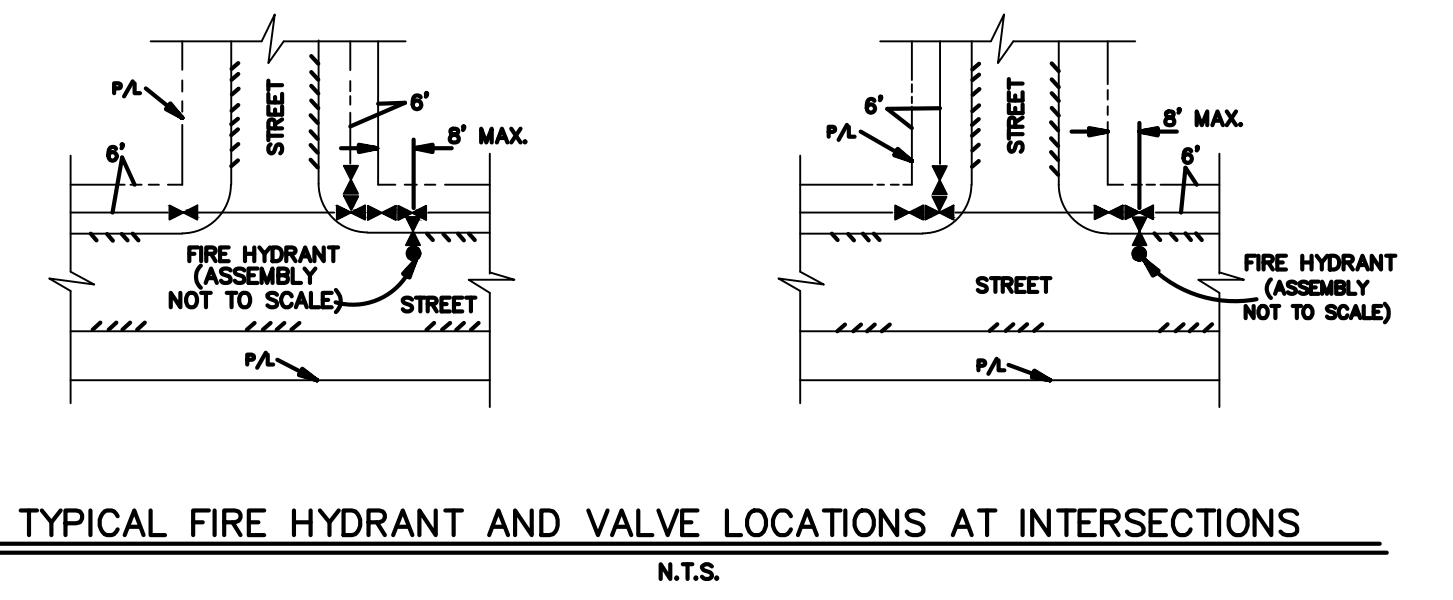
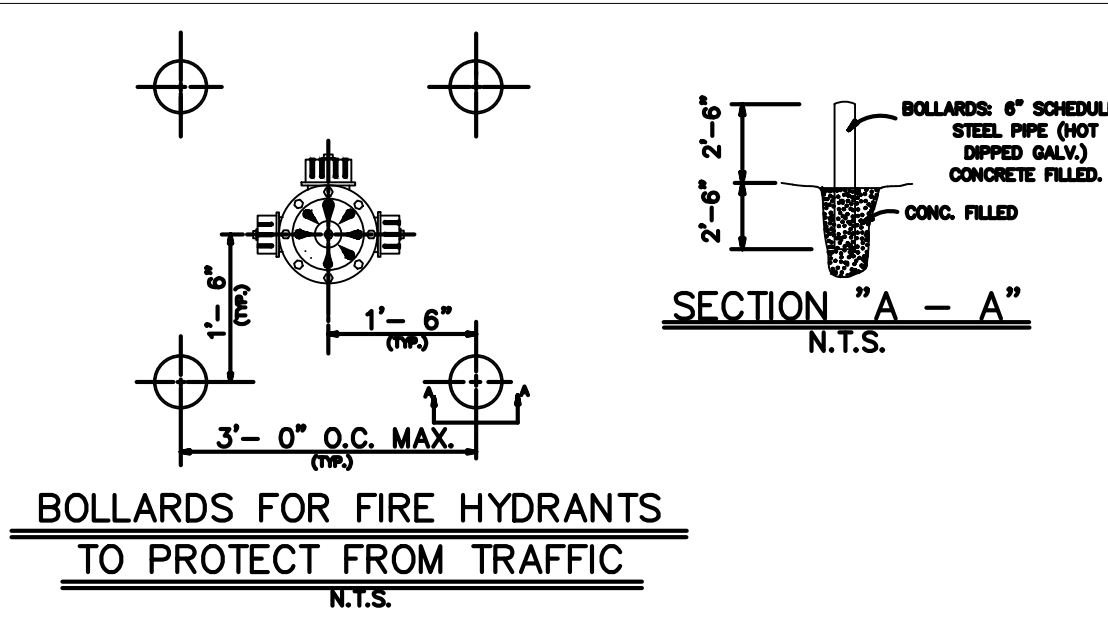
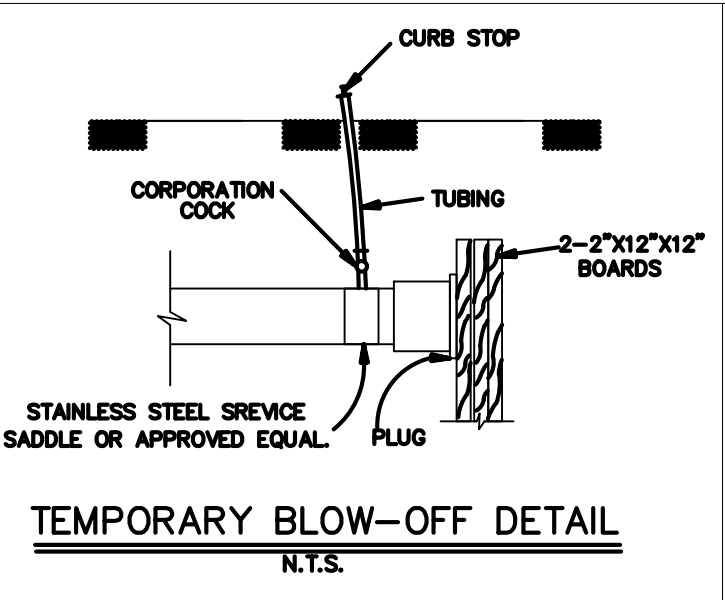
1. WHERE GROUND WATER OR UNSTABLE TRENCH BOTTOM EXISTS, TRENCH BOTTOM SHALL BE STABILIZED (ASTM D2321) TO PROVIDE A WORKING PLATFORM
2. TRENCH DETAIL SHOWN WILL BE MIN. REQUIREMENTS TO SAFEGUARD THE INTEGRITY OF THE WATERLINE INSTALLATION AT HEREIN-SPECIFIED DEPTHS. THE CONTRACTOR SHALL PROVIDE SUFFICIENT SHEETING AND BRACING TO PROVIDE SAFE WORKING CONDITIONS FOR HIS WORKMEN



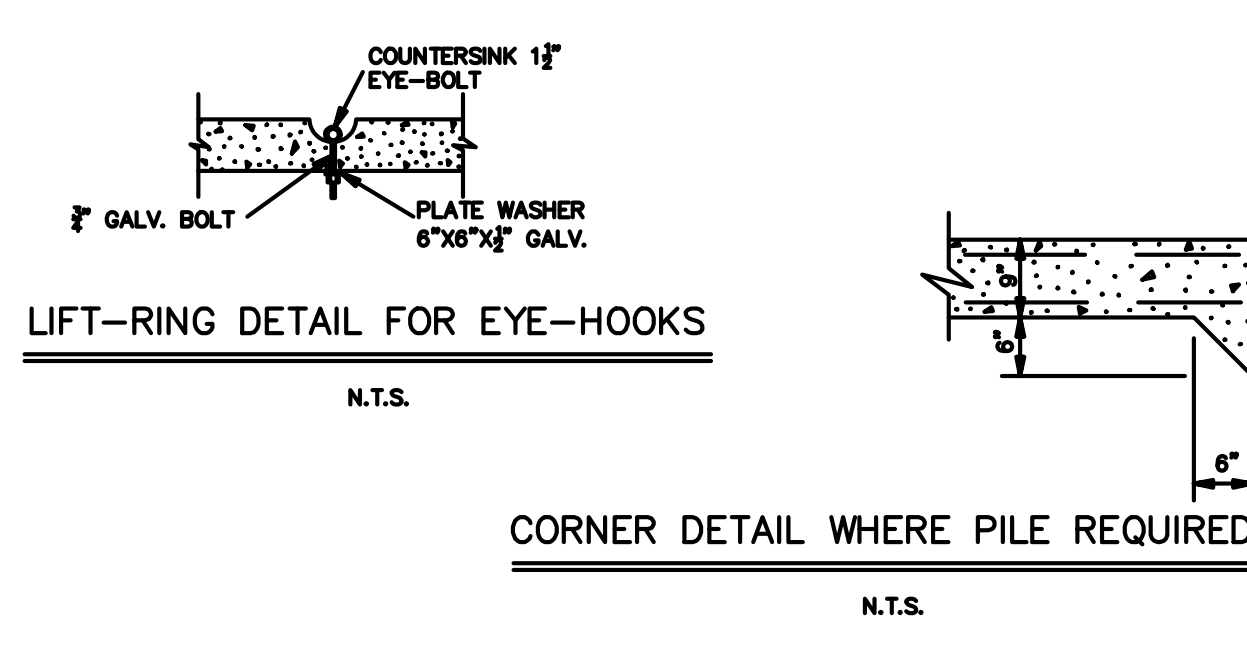
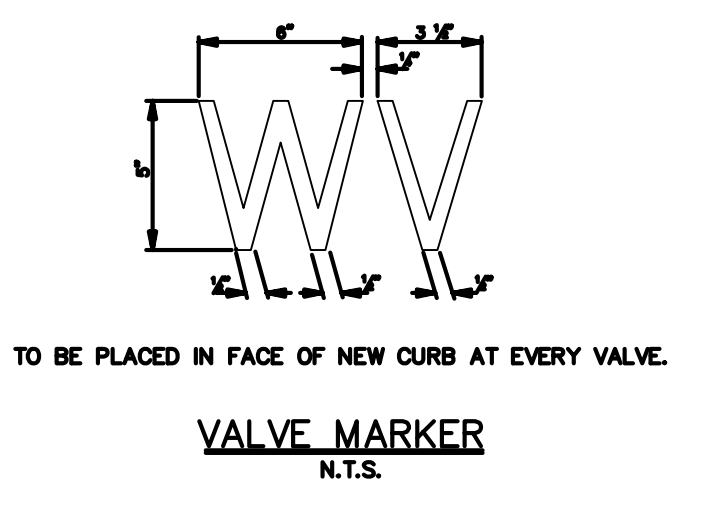
**NOTES:**

NUMBERS AND DIMENSIONS OF REQUIRED BOARDS WILL DEPEND ON THE PIPE SIZE AND TRENCH WIDTH AND SHALL BE DESIGNED ACCORDINGLY. BOARD AND STEEL SHEET PILE SIZES AND DIMENSIONS SHOWN ARE TYPICAL FOR EIGHT-INCH PIPE. BOARD SHALL BE CYPRESS, PRESSURE TREATED TIMBER OR OAK DUNNAGE. THRUST BLOCKING DETAIL FOR LARGER PIPES SHALL BE SUBMITTED TO ST BERNARD PARISH FOR APPROVAL.

\* UNLESS FIELD CONDITIONS AND / OR SPECIAL DESIGN CONDITIONS NECESSITATE, USE OF THRUST BLOCKING SHALL NOT BE PERMITTED. THRUST BLOCKS ARE PERMITTED ONLY WHEN AN ADEQUATE LENGTH OF PIPE CAN NOT BE RESTRAINED DUE TO FIELD CONDITIONS AND/OR FOR TEMPORARY CONSTRUCTION.



NORMAL PIPE SIZE, INCHES	SIZE OF CORPORATION STOP, INCHES
18" AND SMALLER	1
18" THROUGH 36"	2
LARGER THAN 36"	3



**PRECAST METER BOX OPTION SPECIFICATIONS:**

- SELF CONSOLIDATING CONCRETE COPRONTAINING ADMIXTURES MEETING ASTM C484 TYPE A TO ENSURE UNIFORM SUSPENSION OF AGGREGATE THROUGHOUT
- CONCRETE STRENGTH - 5000 PSI (MIN.) @ 28 DAYS
- REINFORCING STEEL: #4, 5, AND 6 BARS PER ASTM A-615, GRADE 60
- ASTM-A48 C-35 H-20/AASHTO M-306.
- LIFTING ANCHOR BY ALL-PATTERSON, INC. MODEL#LU464G (OR APPROVED EQUAL) WITH MINIMUM SAFE WORKING LOAD OF 4,460 LBS PER ANCHOR.
- SHOP DRAWINGS MUST BE SUBMITTED TO ST BERNARD PARISH FOR APPROVAL.

METER SIZE	APPROXIMATE METER LENGTH (IN.)	APPROXIMATE STRAINER LENGTH (IN.)	MIN A (IN.)	MIN B (IN.)	MIN C (IN.)	MIN L (IN.)
4"	20	20	20	30	30	98
6"	24	24	30	30	30	116
8"	30	30	40	40	30	143

**PROJECT NAME :** ST. BERNARD PARISH GOVERNMENT  
STANDARD DETAIL PLANS  
WATER STANDARD DETAILS

**PROJECT NUMBER:**

DATE: 08.09.2019  
 DRAWN BY: MF/AR  
 SCALE: NTS  
 FILENAME: S:\Public Works Shared\St. Bernard Standard Details

APPROVED BY: \_\_\_\_\_  
 DRAWING NUMBER: SD - 9  
 SHEET 9 OF 13

