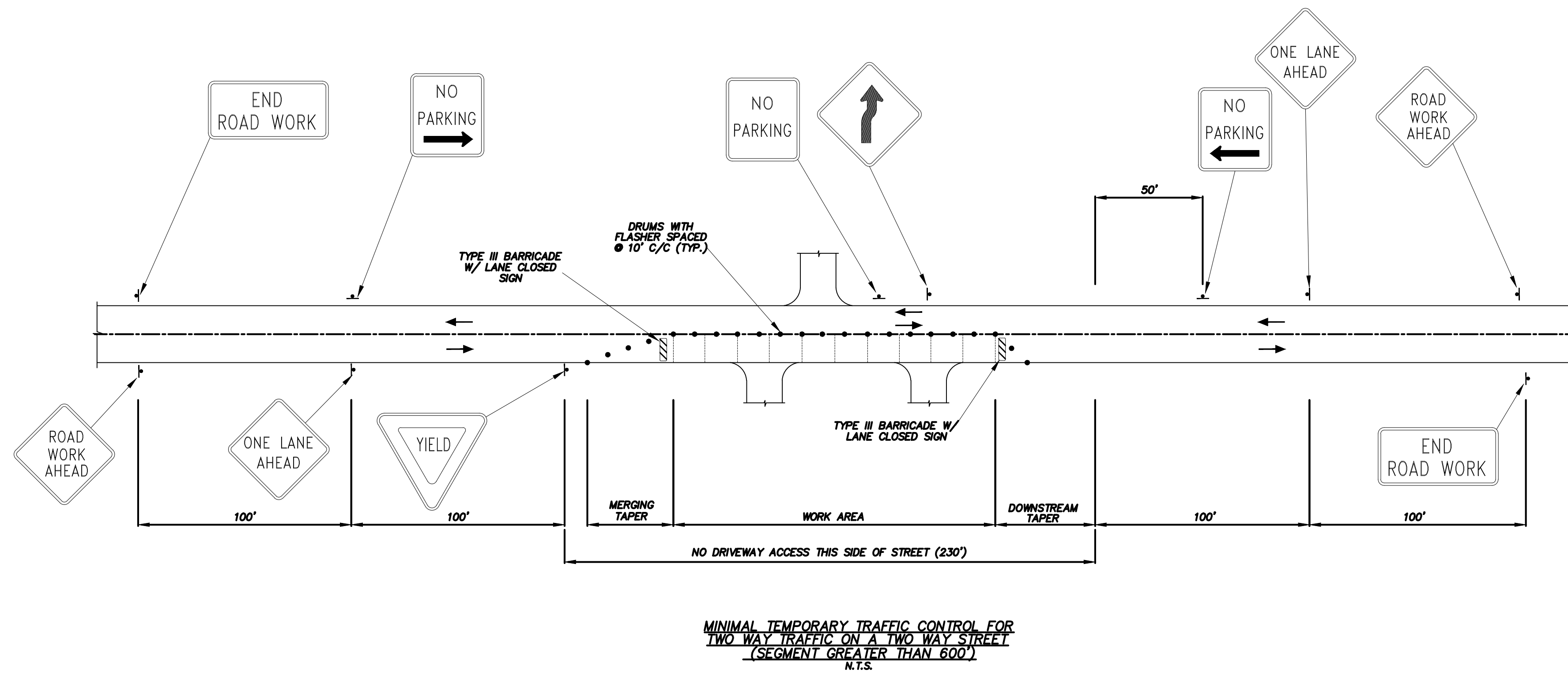


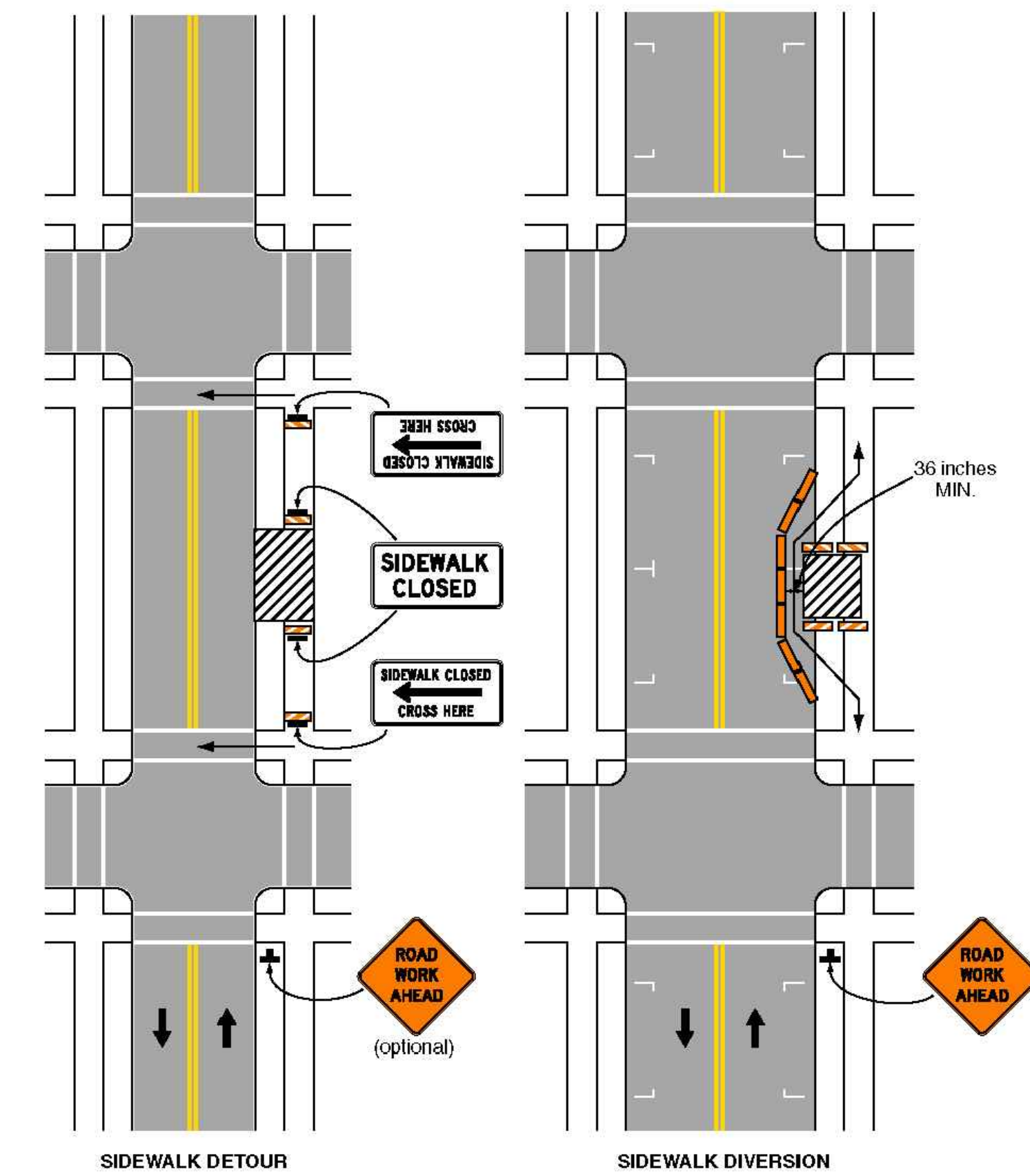
Figure 6H-28. Sidewalk Detour or Diversion (TA-28)



MINIMAL TEMPORARY TRAFFIC CONTROL FOR TWO WAY TRAFFIC ON A TWO WAY STREET (SEGMENT GREATER THAN 600') N.T.S.

**PLAN NOTES:**

- 1) THE TEMPORARY TRAFFIC CONTROL PLANS ON THIS SHEET ARE ONLY TO SERVE AS THE MINIMUM REQUIRED. THE CONTRACTOR SHALL OBTAIN A TRAFFIC CONTROL PLAN FROM A QUALIFIED TRAFFIC CONTROL ENGINEER. QUALIFICATIONS FOR THE TRAFFIC CONTROL ENGINEER SHALL INCLUDE AT LEAST FOUR (4) YEARS OF TRAFFIC ENGINEERING EXPERIENCE AND STATE OF LOUISIANA PROFESSIONAL REGISTRATION. THIS TRAFFIC CONTROL PLAN SHALL HAVE BEEN REVIEWED AND APPROVED BY THE ST. BERNARD PARISH TRAFFIC DIVISION PRIOR TO CONSTRUCTION.
- 2) THE DESIGN AND APPLICATION OF ALL TAPERS, DISTANCES, PAVEMENT MARKINGS, CHANNELIZATION DEVICES AND WARNING SIGNS SHALL CONFORM TO "THE MANUAL ON UNIFORM TRAFFIC CONTROL DEVICES." LATEST EDITION.



Typical Application 28

Note: See Tables 6H-2 and 6H-3 for the meaning of the symbols and/or letter codes used in this figure.

December 2009

Sect. 6H.01

Page 688

2009 Edition

Notes for Figure 6H-28—Typical Application 28  
Sidewalk Detour or Diversion

**Standard:**

1. When crosswalks or other pedestrian facilities are closed or relocated, temporary facilities shall be detectable and shall include accessibility features consistent with the features present in the existing pedestrian facility.

**Guidance:**

2. Where high speeds are anticipated, a temporary traffic barrier and, if necessary, a crash cushion should be used to separate the temporary sidewalks from vehicular traffic.
3. Audible information devices should be considered where midblock closings and changed crosswalk areas cause inadequate communication to be provided to pedestrians who have visual disabilities.

**Option:**

4. Street lighting may be considered.
5. Only the TTC devices related to pedestrians are shown. Other devices, such as lane closure signing or ROAD NARROWS signs, may be used to control vehicular traffic.
6. For nighttime closures, Type A Flashing warning lights may be used on barricades that support signs and close sidewalks.
7. Type C Steady-Burn or Type D 360-degree Steady-Burn warning lights may be used on channelizing devices separating the temporary sidewalks from vehicular traffic flow.
8. Signs, such as KEEP RIGHT (LEFT), may be placed along a temporary sidewalk to guide or direct pedestrians.

TYPICAL SIDEWALK DETOUR PLAN  
(MUTCD TA-28)

PROJECT NAME :

PROJECT NUMBER:



DATE	10.28.2019
DRAWN BY	MF/AR
SCALE:	NTS
FILENAME:	S:\Public Works Shared\St. Bernard Standard Details

<b>ST. BERNARD PARISH GOVERNMENT</b>	
STANDARD DETAIL PLANS	
TRAFFIC CONTROL DETAILS	

APPROVED BY	_____
DATE	_____
THIS DOCUMENT WILL BE CONSIDERED A COPY ONLY, UNLESS EMBOSSED BY A REGISTERED ENGINEER'S SEAL.	

DRAWING NUMBER	<b>SD - 13</b>
SHEET	13 OF 13